

To the Chair and Members of the Schools, Children and Young People Overview and Scrutiny Panel

**CHILDREN AND YOUNG PEOPLE'S CYPS TEENAGE PREGNANCY
UPDATE JANUARY 2014**

| Relevant Cabinet Member | Wards Affected | Key Decision |
|--------------------------------|-----------------------|---------------------|
| Councillor Nuala Fennelly | All | Not applicable |

EXECUTIVE SUMMARY

1. This report sets out the current position in relation to Teenage Pregnancy in Doncaster and support for Young Parent's in Doncaster.

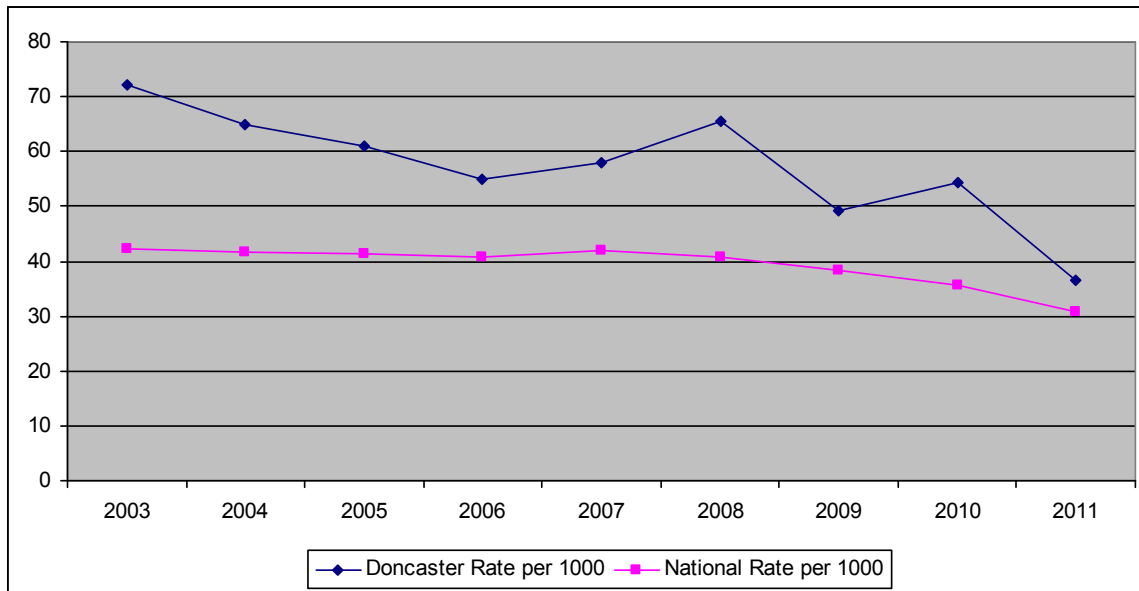
RECOMMENDATION

2. Members are asked to note the report.

BACKGROUND

3. This report provides information on the number and rate of teenage pregnancies in Doncaster and addresses a number of questions raised by Overview and Scrutiny at their last meeting in relation to the move of the Young Parent's Centre to the Maple Referral Unit in Balby; fostering support; Educational attainment; Housing and Prevention of further pregnancies.
4. Although the current performance data from 2011 relating to Under 18 conceptions in Doncaster (36 per 1000) remains higher than the National average (31 per 1000), the trajectory shows a significant reduction in the rate from a high point in 2003 of over 70 per 1000 to below 40 per 1000 for 2011 (Graph below). This equates to 412 pregnancies in 2003 to 204 in 2011, over 50% fewer pregnancies. (Appendix 1 & 2)
5. This improvement has narrowed the gap between Doncaster's figures and the National data. The Local Authority and National data will be updated for 2012 at the end of February and with updated population the rate of conception maybe lower in Doncaster.

Graph Showing Doncaster and National Teenage Pregnancy Rates



Young Parent's Centre

6. The Young Parents Centre moved the Maple Medical Unit in September 2013 in Balby. Previously the centre was located at Hawthorne Primary School. The change in premises has been successful and is a very practical move. Many of the young parents come from the west of Doncaster and the more central location does allow for easier access from elsewhere in the Borough. Where supported transport is required new criteria exist and work with the young people is always to make them more independent but recognising their individual circumstances.
7. Moving to the centre does mean that the future, teaching and skill sharing will be better and staff from all 3 services can work more easily together for the benefit of the young people attending the centre.
8. Older girls, post 16 who wish to attend college or employment, as part of transition arrangements, are still able to use the nursery. The location and the facilities have, staffs believe, had a massive benefit to the young parents and their babies.
9. In terms of school age pregnancy there have been between 25-40 referrals. Although the general trend is that this is reducing year on year.
10. For this year's referrals all young parents are living in their family home. In the past when this has not been possible other options have included:
 - living with different family members
 - boyfriends family
 - Green Gables

Fostering for teenage parents and babies

11. We now commission all Independent Fostering Placement (IFA) Parent Child Placement or Parent and Child Assessments placements via the White Rose Framework for Fostering and Residential which is used by other Local Authorities in the region. This ensures clear overview of service requirements, outcomes, quality assurance and value for money.
12. There are currently 28 Foster Agencies on the Framework and 4 Parent and Child Assessment Units.
13. Cost per week for IFA Parent Child Placement are between £1,100 to £1,525.00.
14. Cost per week for a Parent and Child Unit are between £2,400 to £4,500.00 for a 12 week assessment programme
15. There are only a limited number of placements in Parenting and Assessment Units, in 2011, 2012 there were 4 and 3 respectively. There are currently no placements for 2013.
16. For IFA Parent and Baby Placements these again are limited with 1 in 2011, none in 2012 and one so far for 2013.
17. There are no initiatives within CYPS to promote this type of support. The majority of these placements are made in an emergency, as a result of court proceedings or where the young parent themselves is already in care at the time they become pregnant.
18. Current evidence is that demand is very low for this service, further work is necessary to clarify whether an in house fostering provision would provide a service for an area of unmet need. A well-targeted improved service provision would improve outcomes for children and support more children to remain with their parents, therefore lowering the numbers of children who need to be looked after by the Local Authority.
19. The fostering service is currently undergoing a service restructure aimed at improving our recruitment and assessment of foster carers. The new structure will be fully operational by the end of the financial year and targeted service provision will be considered as part of the next phase. This will include consideration of parent and child fostering according to identified need.

Educational attainment for all Young Parents

20. The service has always been highly thought of by the young people and as a dedicated resource, which is different to that in other authorities, does show to be effective in improving educational attainment demonstrated by the tables below.

Young Parents Centre Roll

Not on YPC Roll

| YEAR | 1A*-G | 5A*-G | 1A*-C | 5A*-C | 1A*-G | 5A*-G | 1A*-C | 5A*-C |
|--------|-------|-------|-------|-------|-------|-------|-------|-------|
| Jun-10 | 100 | 89 | 89 | 67 | 86 | 50 | 43 | 21 |
| Jun-11 | 100 | 89 | 89 | 22 | 81 | 50 | 56 | 6 |
| Jun-12 | 100 | 92 | 92 | 15 | 100 | 33 | 17 | 0 |
| Jun-13 | 100 | 90 | 90 | 20 | 100 | 71 | 71 | 14 |

Housing Choice for Single Teenage Parents

21. Overall the provision for single teenage parents is limited. Main concerns have been in relation to the limited supply and often the rented accommodation is not of a high standard. The feedback from staff is that the bedroom tax has had impacted on availability/choice of housing and benefits young mothers receive.
22. Whilst all young people this year are having to stay within the family home this is not always best option for mother and baby
23. The main housing options are provided by four groups, Green gables, Housing options (LA); M25 Young People's Housing and Doncaster Housing for Young People.

Prevention of 2nd pregnancies

24. There is a universal offer to all post-natal women for appointment with specialist nurses (sexual health service prevention of second pregnancy (P2P) nurses) who provide contraception and sexual health advice. Young women under care of teenage pregnancy midwife and/or family Nurse Partnership are encouraged to speak to P2P nurses in ante-natal period.
25. Green Gables, Maple Medical Young Parents centre and Family Nurse partnership all offer young vulnerable mothers support and advice in developing life skills and independent living enabling young mothers to build confidence and make good choices for their future.
26. In terms of prevention, there are many factors to consider. A high percentage of referrals are chosen pregnancies rather than accidental and therefore the ways of addressing them go beyond a peer marketing campaign or education around contraception. There are two key developments that can impact positively on these young women:
 1. **Peer Education** - we have previously run this project and targeted the most at risk school age girls. Over 150 girls received this support and resulted in only 1 pregnancy. Sadly, due to lack of funding and interest this intervention ended 18 months ago however I do feel it contributed to the reduction in numbers

2. **Raising the age of participation** – this gives young people other options whilst restricting the possibility of staying at home post 16 and claiming benefits

OPTIONS CONSIDERED AND REASONS FOR RECOMMENDED OPTION

27. Not applicable

IMPACT ON THE COUNCIL’S OBJECTIVES

| | Doncaster Priorities | Implications of this initiative |
|--|------------------------------|--|
| | A Prosperous Place | Improving services and outcomes for children and young people improve their safety, health and educational attainment and help create a more prosperous and safer Borough. |
| | Skills and Lifelong Learning | |
| | Healthy and Caring | |
| | Equality of Opportunity | |

RISKS AND ASSUMPTIONS

28. There are no risks the paper is for information

HUMAN RESOURCE IMPLICATIONS

29. There are no HR implications

LEGAL IMPLICATIONS

30. The local authority’s powers and duties for education and vulnerable children are enshrined in long standing legislation.

FINANCIAL IMPLICATIONS

31. The activities are currently funded

CONSULTATION

32. NA

BACKGROUND PAPERS

33. NA

REPORT AUTHOR AND CONTRIBUTORS

Mil Vasic, Assistant Director Commissioning and Performance,
mil.vasic@doncaster.gov.uk

Sarah Holmes, Commissioning Officer CYPs, Sarahholmes@doncaster.gov.uk

Eleanor Brazil
Director Children and Young People's Service

Annex A: Teenage Pregnancy Data and Trends



Annex 2: Raw Data

| Area | Period | Numerator | Denominator | Rate | Lower 95% CI | Upper 95% CI |
|-----------------|-----------|-----------|-------------|-------|--------------|--------------|
| England & Wales | 2009-2011 | 103,943 | 2,978,200 | 34.90 | 34.69 | 35.11 |
| Doncaster | 2001-2003 | 1,134 | 16,500 | 68.73 | 64.78 | 72.85 |
| Doncaster | 2009-2011 | 798 | 17,040 | 46.83 | 43.64 | 50.20 |
| England & Wales | 2001 | 40990 | 960900 | 42.66 | 42.25 | 43.07 |
| | 2002 | 41951.0 | 977900 | 42.90 | 42.49 | 43.31 |
| | 2003 | 42162 | 995700 | 42.34 | 41.94 | 42.75 |
| | 2004 | 42198 | 1010400 | 41.76 | 41.37 | 42.16 |
| | 2005 | 42325 | 1021100 | 41.45 | 41.06 | 41.85 |
| | 2006 | 41768 | 1021600 | 40.88 | 40.49 | 41.28 |
| | 2007 | 42988 | 1024700 | 41.95 | 41.56 | 42.35 |
| | 2008 | 41361 | 1015800 | 40.72 | 40.33 | 41.11 |
| | 2009 | 38259 | 998500.0 | 38.32 | 37.93 | 38.70 |
| | 2010 | 34633 | 974700 | 35.53 | 35.16 | 35.91 |
| | 2011 | 31051 | 1005000 | 30.90 | 30.55 | 31.24 |
| Doncaster | 2001 | 344 | 5340 | 64.42 | 57.79 | 71.60 |
| | 2002 | 378 | 5460 | 69.23 | 62.43 | 76.57 |
| | 2003 | 412 | 5700 | 72.28 | 65.47 | 79.61 |
| | 2004 | 381 | 5880 | 64.80 | 58.45 | 71.64 |
| | 2005 | 358 | 5880 | 60.88 | 54.74 | 67.53 |
| | 2006 | 327 | 5,940 | 55.05 | 49.24 | 61.35 |
| | 2007 | 345 | 5940 | 58.08 | 52.11 | 64.54 |
| | 2008 | 386 | 5880 | 65.65 | 59.26 | 72.53 |
| | 2009 | 284 | 5760 | 49.31 | 43.74 | 55.39 |
| | 2010 | 310 | 5700.0 | 54.39 | 48.50 | 60.79 |
| | 2011 | 204 | 5580 | 36.56 | 31.71 | 41.93 |